

triplet



Triplet is a multifunctional body care tool made from aluminum, designed with a specific focus on addressing sleep-related concerns. In today's fast-paced world, eye fatigue has become a chronic issue that negatively impacts sleep quality. This sleek and mirror-finished tool aims to alleviate stiffness and fatigue by targeting key areas associated with eye strain. By stimulating the scalp, eye area, and back of the neck, it promotes relaxation and relief. The shiny surface adds a touch of elegance to the tool, making it visually appealing and inviting for regular use in your self-care routine.

Designed by: Yoshiki Matsuyama

Supervised by: Kazumi Hasegawa

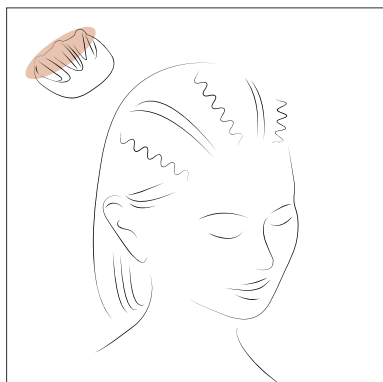
triplet

Made of a corrosion-resistant type of aluminium, it can be used for massaging with oil or while bathing in the bath.

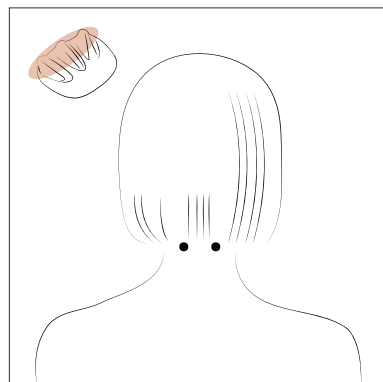
The three-pronged form can be used for both gentle gliding and strong acupressure-like pressure. This distinctive form is also suitable for a full-body approach and can be used for fat stimulation, for example.

* When in direct contact with the skin, the use of oil is recommended.

* After use, wash with a neutral detergent and wipe dry with a towel.



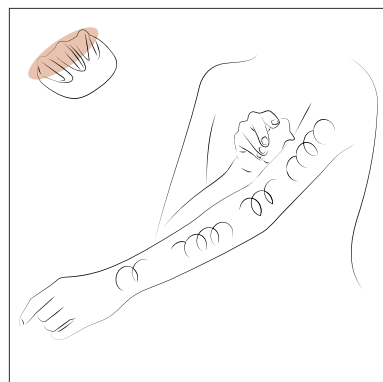
Apply pressure to the scalp on the front or sides of the head, and rock the product in a zigzag motion from the hairline to the crown of the head.



Press the product at the back of the neck and hairline.



Press the product gently around the eyes (use of oil is recommended).



Glide the product gently and evenly in a circular motion from the back of the hand to the arm (use of oil is recommended).



triplet JPY3,960 (tax included)

Size: W72xD60xH28mm, Weight: 90g

Material: Aluminium, Surface Treatment: Polishing

collinette series



The collinette series is manufactured using mould casting and polishing techniques refined for hundreds years in Takaoka, Toyama. The organic lines, inspired by natural forms, not only look beautiful when placed on the table, but also conform to the face and body when massaging. The size fits in the palm of your hand, allowing you to take it with anywhere.

The collinette series is manufactured using mould casting and polishing techniques refined for hundreds years in Takaoka, Toyama. The organic lines, inspired by natural forms, not only look beautiful when placed on the table, but also conform to the face and body when massaging. The size fits in the palm of your hand, allowing you to take it with anywhere.

Designed by: Yoshiki Matsuyama

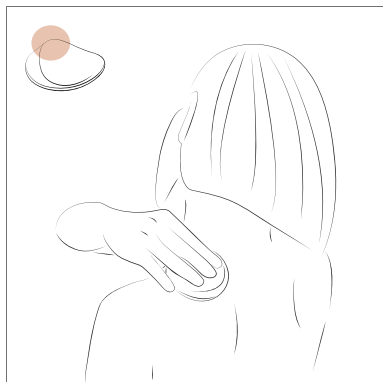
Supervised by: Kazumi Hasegawa

collinette

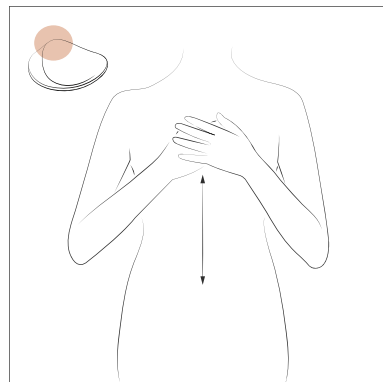
Focus on “stiffness” :

The round shape of the collinette is recommended for those who want to do full-body self-care easily. It improves blood circulation by relaxing and loosening your body. You can press the hill-shaped surface on your body to relieve muscle fatigue and tension.

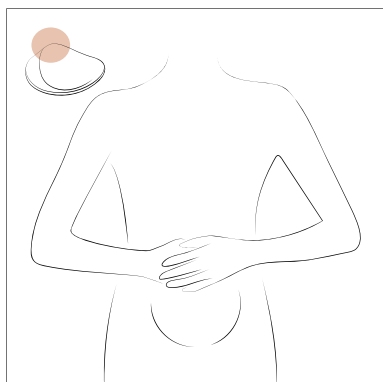
NB: When in direct contact with the skin, the use of oil is recommended.



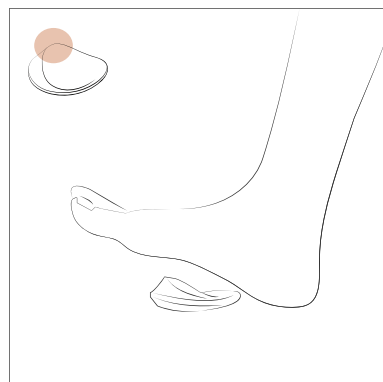
Shoulders: Place the product on the sore muscle and apply a comfortable amount of pressure.



Solar plexus area: Apply the product to the upper-centre of the chest and slide up and down to the area around the solar plexus.



Stomach: Glide the product around the navel while taking deep breaths.



Foot: Stimulate the bottom of the foot.



collinette JPY3,300 (tax included)
Size: W76xD76xH30mm, Weight: 128g
Material: Aluminium, Surface Treatment: Polishing

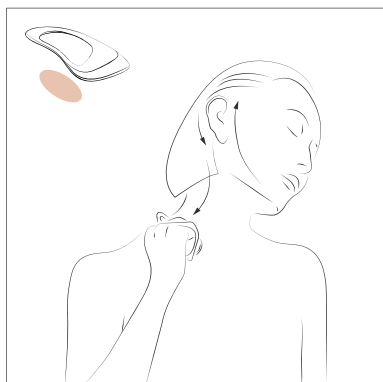
collinette lymph

Focus on Your "lines" :

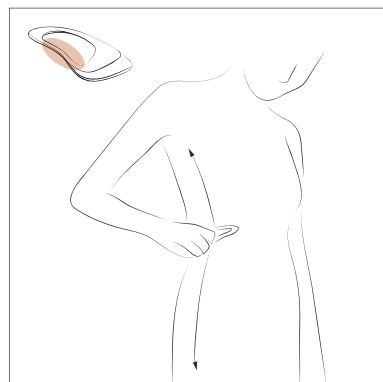
The colinette lymph has a tip and smoothly curved sides that fit easily from the face to the body line. It improves blood circulation throughout the body and relieves muscle stiffness.

The shape makes it easy to hold and apply pressure, making it suitable for use by all genders and ages.

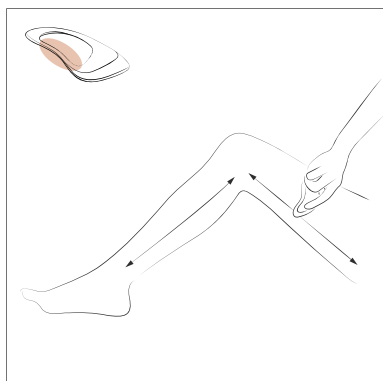
NB: When in direct contact with the skin, the use of oil is recommended.



Face line: Glide the product diagonally sideways.



Body line: Glide the product over the sides of the body.



Foot line: Shake the ankle to loosen and glide the product over the entire foot.



collinette lymph JPY5,500 (tax included)

Size: W118xD60xH30mm, Weight: 87g

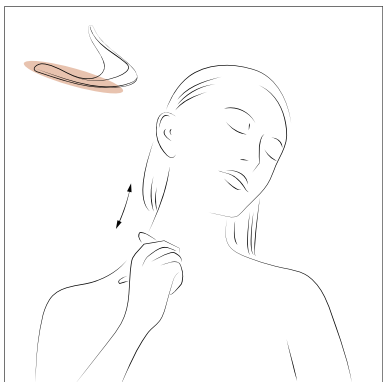
Material: Aluminium, Surface Treatment: Polishing

collinette aile

Focus on “three necks” :

In Oriental medicine, the neck, wrists and ankles are referred to as “the three necks” and are believed to be the areas to focus on and keep warm. The asymmetrical, loose V-shaped collinette aile can be used to care for the three 'necks' (neck, wrist and ankle) by pinching or pressing the tips in the arms and legs , improving blood circulation throughout the body. The smooth curves of the product fit the face and body lines and various other areas.

NB: When in direct contact with the skin, the use of oil is recommended.



Neck: Glide the product over the back of the neck and lower part of the head.



Wrist: Press the product against the wrist and gently rock it.



Ankle: Press the product against the ankle and gently rock it.



collinette aile JPY5,500 (tax included)

Size: W105xD96xH34mm, Weight: 71g

Material: Aluminium, Surface Treatment: Polishing

collinette lymph DLC



“collinette” is an aluminium relaxation tool. The name means “small hill” in French. Collinette series is inspired by many patterns and shapes in nature. This visually stimulating product fits perfectly along the face and body. Supervised by a naturopathic therapist with extensive knowledge and experience in oriental medicine, it can be used for the whole body. Lightweight and rust-resistant, it can be used in the bath and can be quickly washed.

Designed by: Yoshiki Matsuyama

Supervised by: Kazumi Hasegawa

collinette lymph DLC

This product is made from aluminum collinette lymph, with its surface coated with diamond-like carbon (DLC) to create a distinctive deep black hue. DLC is a unique coating used to enhance the surface performance of metals in various applications, including industrial components and medical equipment. The coating consists of a thin film of carbon atoms, similar to diamonds, that offers exceptional hardness, corrosion resistance, and biocompatibility with the human body.



collinette lymph DLC JPY8,800 (tax included)
Size: W118 x D60xH30mm, Weight: 87g
Material: Aluminium, Surface Treatment: DLC coating

cygne



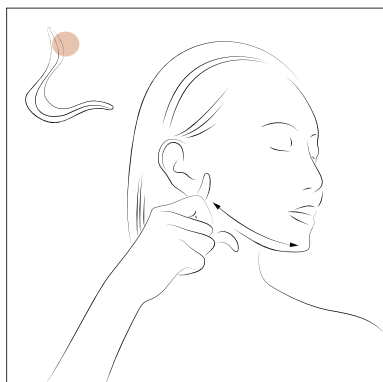
Cygne, meaning 'swan' in French, is a facial-focused self-care tool that combines elegance and functionality. Made from pure titanium, it offers a gentle touch on the skin and is known for its hypoallergenic properties, making it suitable for those with metal sensitivities.

The design of Cygne includes a grounding feature, allowing it to be placed on the floor during use, ensuring a clean and hygienic contact area with the skin. Its graceful appearance makes it a visually pleasing accessory that can be displayed on a dresser or in a bathroom, adding a touch of beauty to your surroundings.

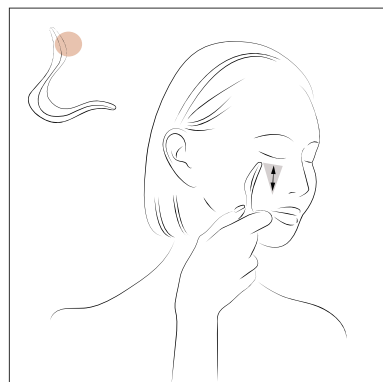
Designed by: Yoshiki Matsuyama

cygne

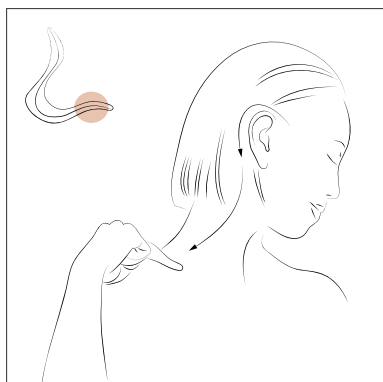
The Cygne self-care tool features a distinctive design resembling a swan gazing at the sky. It incorporates a combination of elements, including gentle curves that follow the natural contours of the face and sharper shapes that target pressure points, providing a stimulating experience. Each ergonomic shape is carefully crafted to seamlessly conform to the unique contours of your face. For optimal use, it is recommended to apply oil or a suitable lubricant when the tool comes into direct contact with the skin.



Slide the product under the chin down to below the ear.



Press the product vertically against the cheeks (a triangle area in the picture) and rock it gently



Glide the product from near the temples, through the back of the ears and down towards the neck.



cygne silver
JPY22,000 (tax included)
Size: W89xD21xH93mm
Weight: 80g
Material: Titanium
Surface Treatment:
Polishing



cygne gold
JPY27,500 (tax included)
Size: W89xD21xH93mm
Weight: 80g
Material: Titanium
Surface Treatment:
Anodic oxidation



cygne champagne gold
JPY27,500 (tax included)
Size: W89xD21xH93mm
Weight: 80g
Material: Titanium
Surface Treatment:
Anodic oxidation



cygne chocolate brown
JPY27,500 (tax included)
Size: W89xD21xH93mm
Weight: 80g
Material: Titanium
Surface Treatment:
Anodic oxidation